



# Shamir Spectrum+™

The ergonomic everyday lens



# Shamir Spectrum+™

A powerful progressive lens, enhanced for comfortable reading

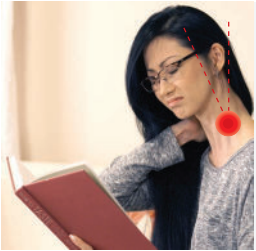
## What's the Plus?

Shamir Spectrum+™ – A progressive lens that delivers a sharp and comfortable visual experience, with broad near reading zones, and emphasizes customers' individual reading posture.

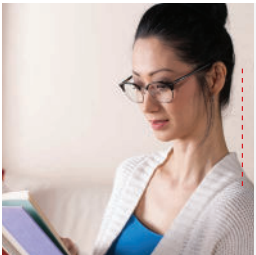
## Who is it for ?

Cost-conscious eyeglass wearers who require visual clarity, specifically when reading books and focusing on nearby objects

## Shamir Spectrum+™ with Natural Posture™ Technology



**Progressive Without Natural Posture™**  
Improper Posture  
Causing Discomfort



**Shamir Spectrum+™**  
Natural, comfortable  
reading posture



## Natural Posture™ Technology Ergonomic Design Concept

This technology dynamically locates the near viewing zone within the lens corridor, taking into account the positive or negative power of the prescription. This reduces the need to tilt the head forward or back, or alternatively to lower or raise a book when reading in an attempt to find the right viewing distance and angle.

Any postural discomfort is thereby minimised and patients are ensured a comfortably natural posture during near viewing. **Shamir Spectrum+™** employs the ergonomic design concept, **Natural Posture™ Technology**, that customises the positioning of the near viewing zone to the patient's prescription, taking into account its positive or negative power. The result is, natural reading posture providing optimal focus. **Shamir Spectrum+™** ensures a natural, comfortable, near viewing experience all day long.

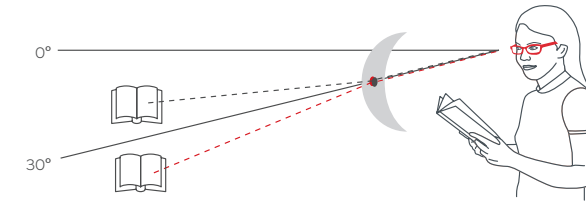
In addition, **Shamir Spectrum+™** also includes all the cutting edge features of Shamir lens design:

## Eye-Point Technology™ for enhanced vision

Ensuring accurate design and analysis, this technology combines lens surface topography data with an advanced algorithm to calculate optical performance of thousands of locations on the progressive lens surface. The result is enhanced accurate vision for myopes and presbyopes alike.



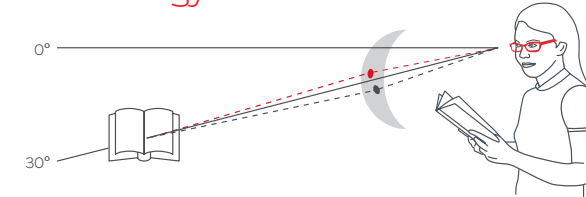
## Standard Progressives lens



Object displaced higher or lower depending on the Rx.

⊖ Minus power lens - - - - ⊕ Plus power lens - - - - -

## Spectrum+™ with Natural Posture Technology



Dynamic positioning of reading zone allows viewing at a more comfortable, natural position.

⊖ Minus power lens - - - - ⊕ Plus power lens - - - - -

## Advantages that make the difference

- Near viewing zone optimally positioned for natural posture and comfort while reading
- Viewing zones are up to 20% wider than in standard progressives
- Far vision is improved with greater clarity in the far viewing zone due to a more stable lens design than that of standard PALs.

# Shamir Spectrum+™ Availability

Minimum Fitting Heights: 14mm, 16mm, 18mm | ADD: 0.75 - 3.50

Material	Prescription Range [D]
1.5 Clear, Blue Zero™, Transitions® GEN 8, XTRActive, XTRActive Polarized® Drivewear, NuPolar® Polarized, Gradient & Mirror, Infinite	-7.00 to +6.00
1.53 Trivex™, Blue Zero™, Transitions® GEN 8, Drivewear, NuPolar® Polarized	-8.00 to +6.00
1.56 Acclimates	-7.00 to +6.00
1.59 Polycarbonate, Transitions® GEN 8, XTRActive, NuPolar® Polarized Gradient	-8.00 to +6.00
1.6 Superlite™, Blue Zero™, Tribrid™, Transitions® GEN 8 resin & Tribrid, XTRActive, XTRActive Polarized, NuPolar™ Polarized	-10.00 to +6.00
1.67 Superlite™, Blue Zero™, Transitions® GEN 8, XTRActive, XTRActive Polarized, NuPolar® Polarized	-10.00 to +8.00
1.74 Superlite™, Transitions® GEN 8	-13.00 to +13.00

To order **Shamir Spectrum+**, simply provide the following information:

- Patient prescription
- Frame Data: A, B, DBL or frame tracer file
- Fitting height (center pupil)
- Mono PD (far)

